

## Coffee Coaster

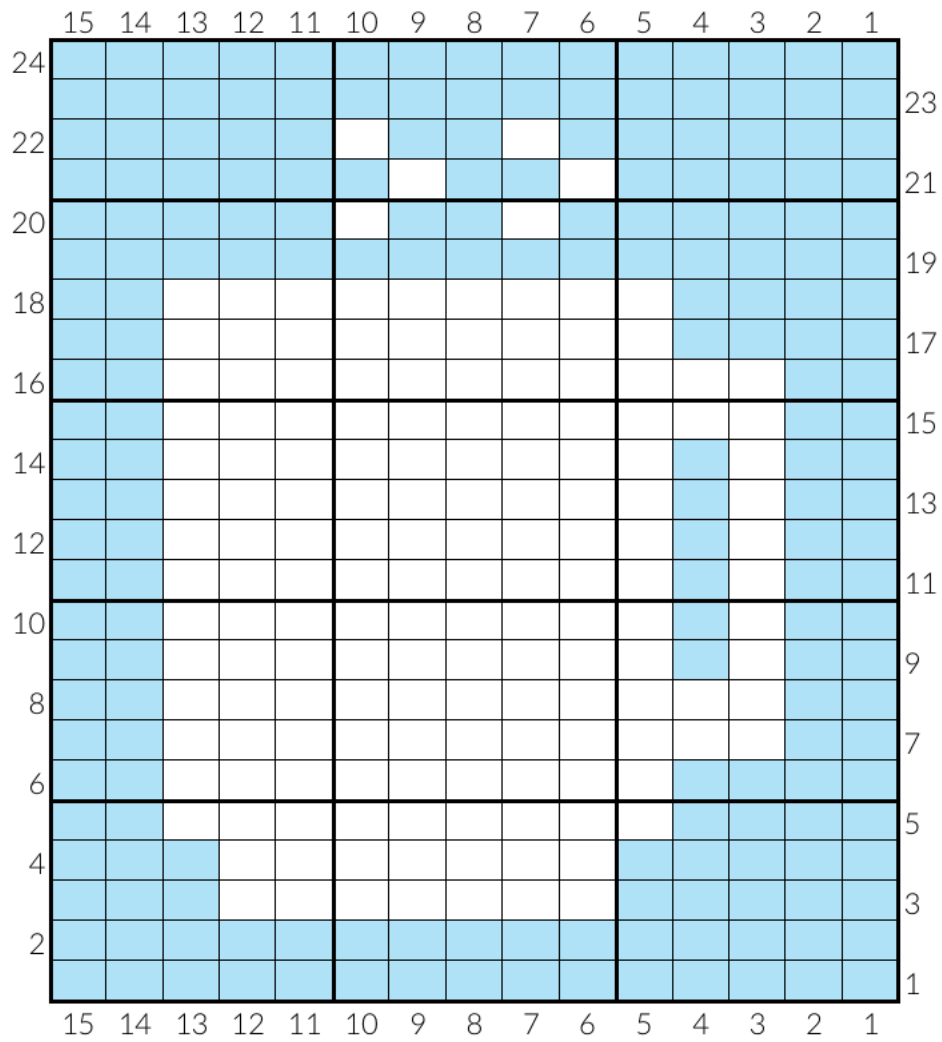


Worsted weight cotton yarn in two contrasting colors (approx 10g each)

Size 6 needles

Yarn needle

1. Tie a double knot loosely but do not count it as a stitch (will undo it at the end and weave in.)
2. Use invisible cast on to CO 17 of each color.
3. Always knit/purl the first pair (individually), and slip the last two purl wise (the yarn color for the knit wise stitch held in back, and the yarn color for the purl wise stitch moved to the front before slipping that stitch. The purl yarn should be under the knit color yarn). The pair at the beginning and end are not shown in the chart.
4. Work chart on the next page.
5. Bind off with invisible bind off.
6. Untie slip knot and weave in those ends.



[www.cushionofjoy.com](http://www.cushionofjoy.com)

Copyright 2020 Susan Relland